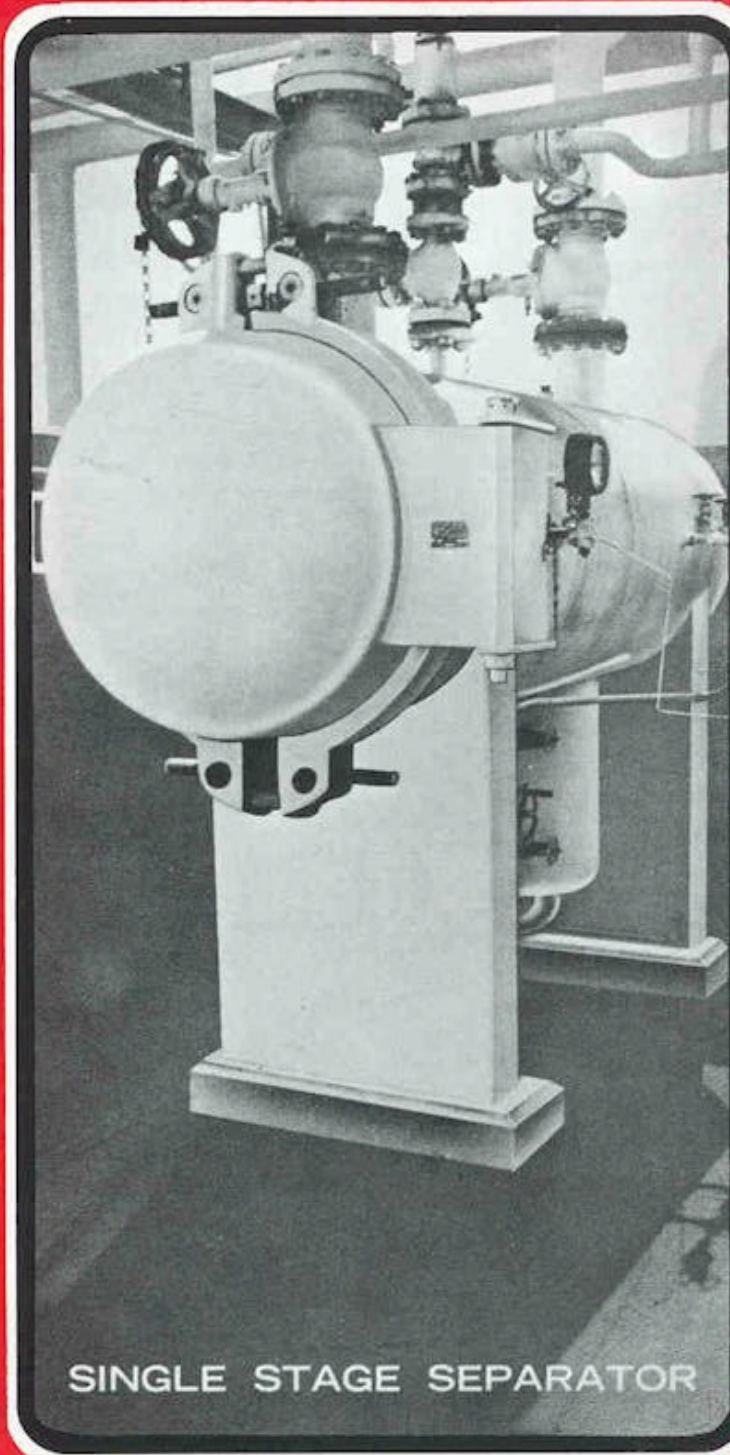
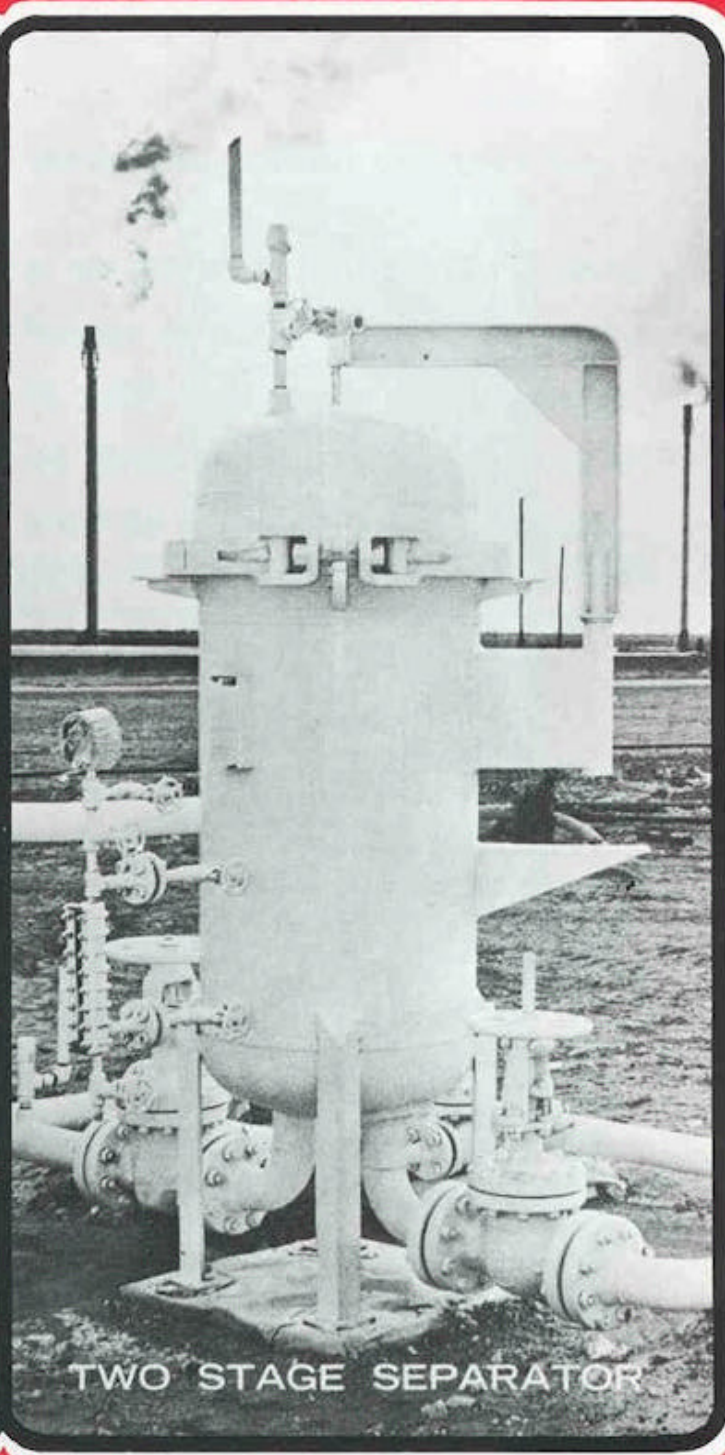




Perry Equipment Corporation is ISO-9001 Certified



SINGLE STAGE SEPARATOR



TWO STAGE SEPARATOR

LIQUID PHASE SEPARATORS

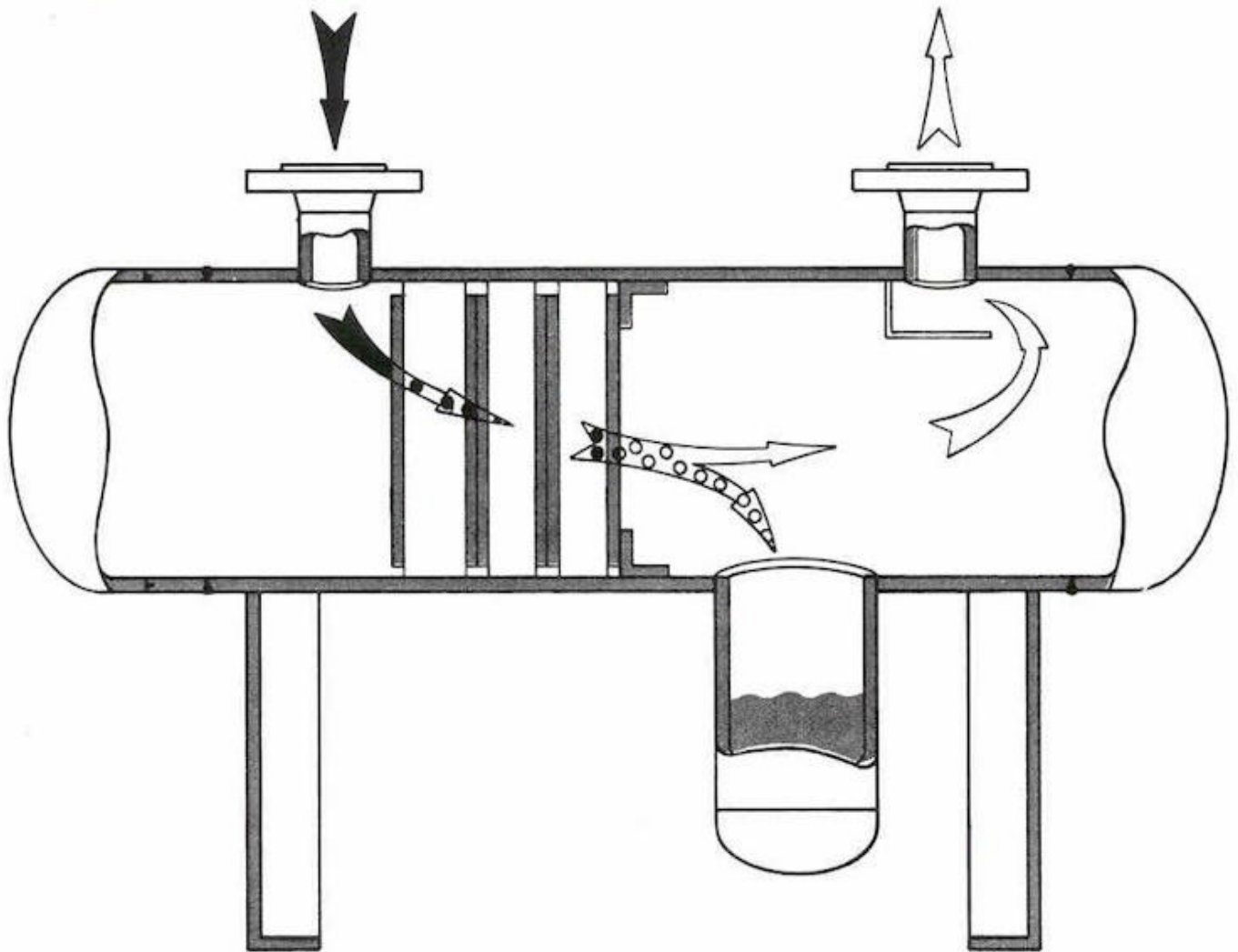
THE PECO SINGLE STAGE SEPARATOR

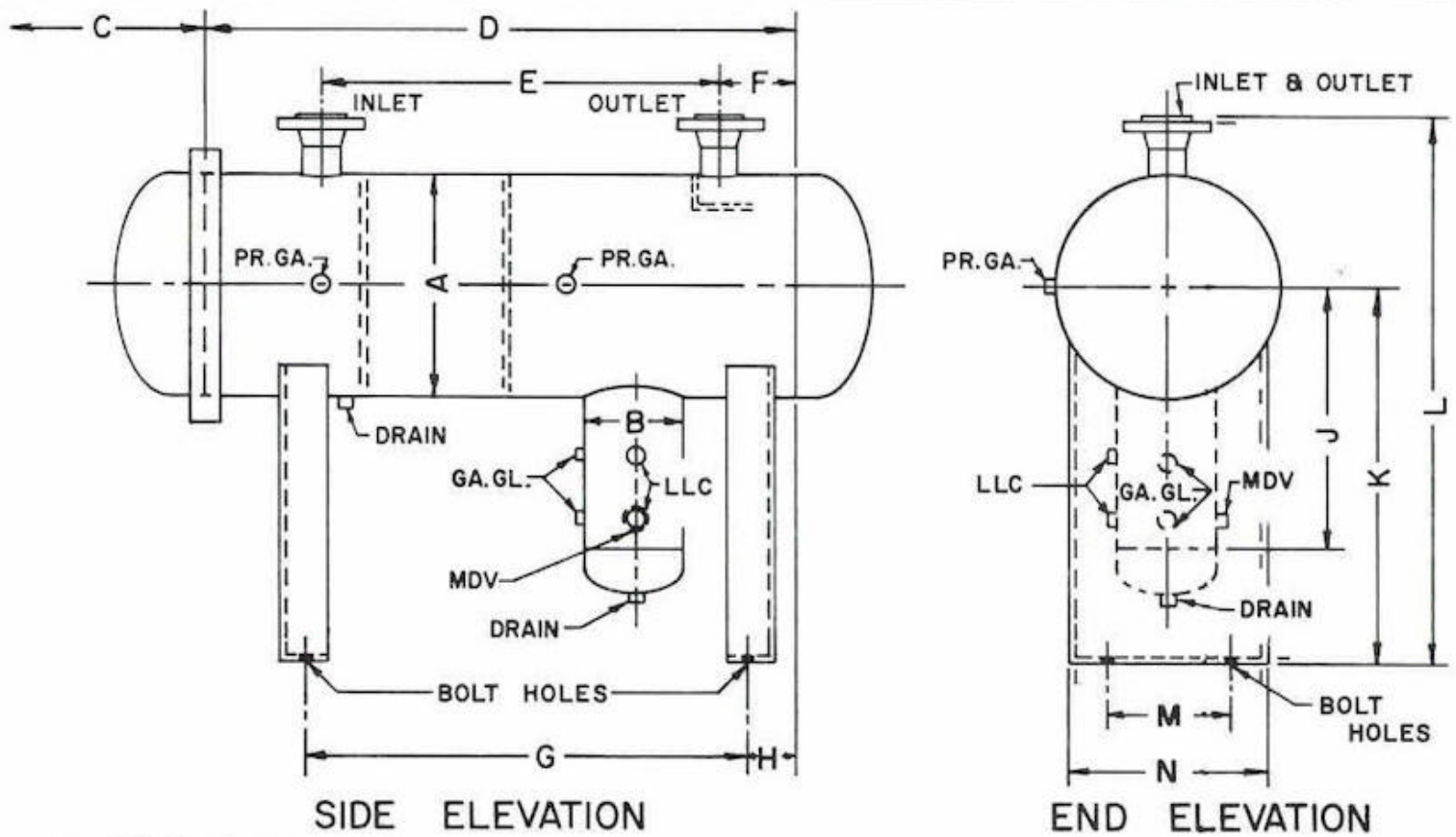
The Peco Series 110H single stage separator is an economical workhorse for removing water and coarse solids from process streams and product pipe lines. Peco offers a wide range of vessel sizes to meet various problems.

The Series 110H can prove to be a highly versatile unit. The same vessel design can be used, either as a filter or modified to efficiently remove water by merely changing the elements. Its hori-

zontal design provides desired gravit separation after coalescing.

Standard vessels are designed in carbon steel for pressures up to 150 psig ASME Code. Each unit is furnished with the unique Peco Closure for ease servicing. Vessel capacities range from 10 to 2,000 gallons per minute. Unit for special applications requiring other materials or special connections may be ordered through the factory.

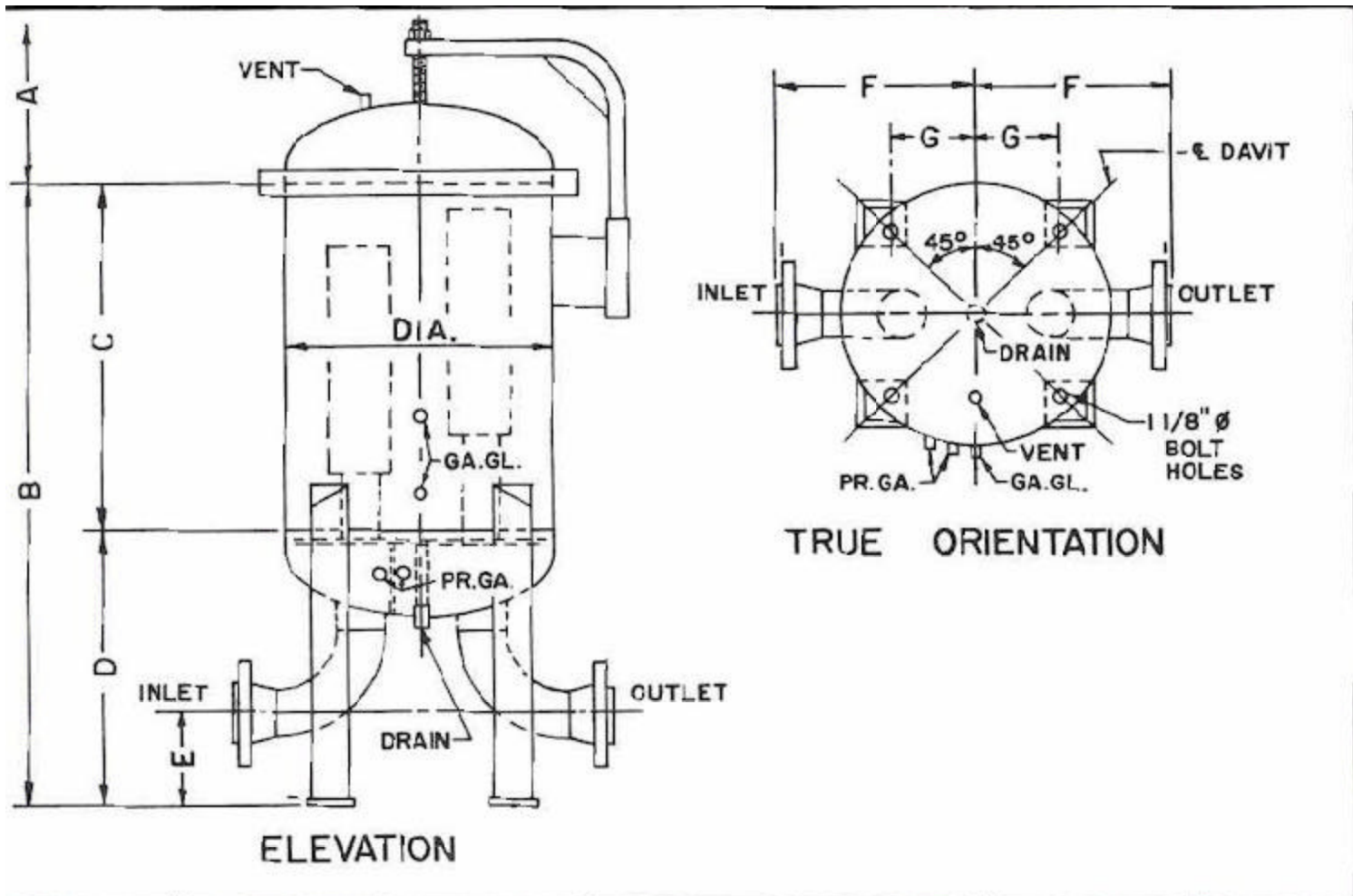




BOLT HOLES } 4"-24" CASE = 7/8" ϕ
 30"-54" CASE = 1 1/8" ϕ

PECO SERIES 110 H SINGLE STAGE SEPARATOR

MODEL	A	B	C	D	E	F	G	H	J	K	L	M	N	In & Out	P.G.	G.G.	LCC	MDV
110H★4	4½	3½	18	30	20	3	16	5	14	22	30	6	12	2	¼	¾	—	—
110H★6	6⅝	3½	18	36	25	3	21	5	15	23	32	6	12	2	¼	¾	—	—
110H★8	8⅝	4½	18	48	33	5	33	5	20	29	41	6	12	3	¼	¾	—	—
110H★10	10¾	6⅝	18	48	33	5	33	5	21	31	44	6	12	3	¼	¾	1½	1
110H★12	12¾	6⅝	20	60	44	5	44	5	24	34	48	6	12	3	¼	¾	1½	1
110H★16	16	8⅝	28	72	56	5	50	8	26	36	52	8	14	3	¼	¾	1½	1
110H★20	20	8⅝	36	84	62	8	62	8	34	44	62	12	18	4	¼	¾	1½	1
110H★24	24	10¾	43	84	62	8	62	8	36	47	67	16	22	4	¼	¾	1½	1
110H★30	30	12¾	50	84	62	8	52	10	39	51	74	22	28	6	¼	¾	1½	1
110H★36	36	16	58	96	68	8	64	10	42	55	81	28	34	6	¼	¾	1½	2
110H★42	42	20	69	102	74	8	70	10	51	66	95	34	40	6	¼	¾	1½	2
110H★48	48	20	78	108	76	10	76	10	54	69	103	38	44	8	¼	¾	1½	2



PECO SERIES 110 V TWO STAGE SEPARATOR

MODEL	Dia.	A	B	C	D	E	F	G	In & Out	P.G.	Vent	G.G.	Dia.
110V-4C18-6S13	24	30	68	42	26	8	16	7 ³ / ₄	4	1/4	1/2	3/4	1
110V-6C12-8S13	26	30	72	42	30	8	21	8 ¹ / ₂	6	1/4	1/2	3/4	1
110V-6C14-10S11	28	36	68	37	31	8	21	9 ¹ / ₂	6	1/4	1/2	3/4	1
110V-12C12-15S11	28	30	79	48	31	8	21	9 ¹ / ₂	6	1/4	1/2	3/4	1
110V-12C18-21S11	36	36	98	60	38	10	27	12	8	1/4	1/2	3/4	1
110V-33C16-27S11	36	36	98	60	38	10	27	12	8	1/4	1/2	3/4	1
110V-45C16-24S15	42	36	110	65	45	12	33	14	10	1/4	1/2	3/4	1



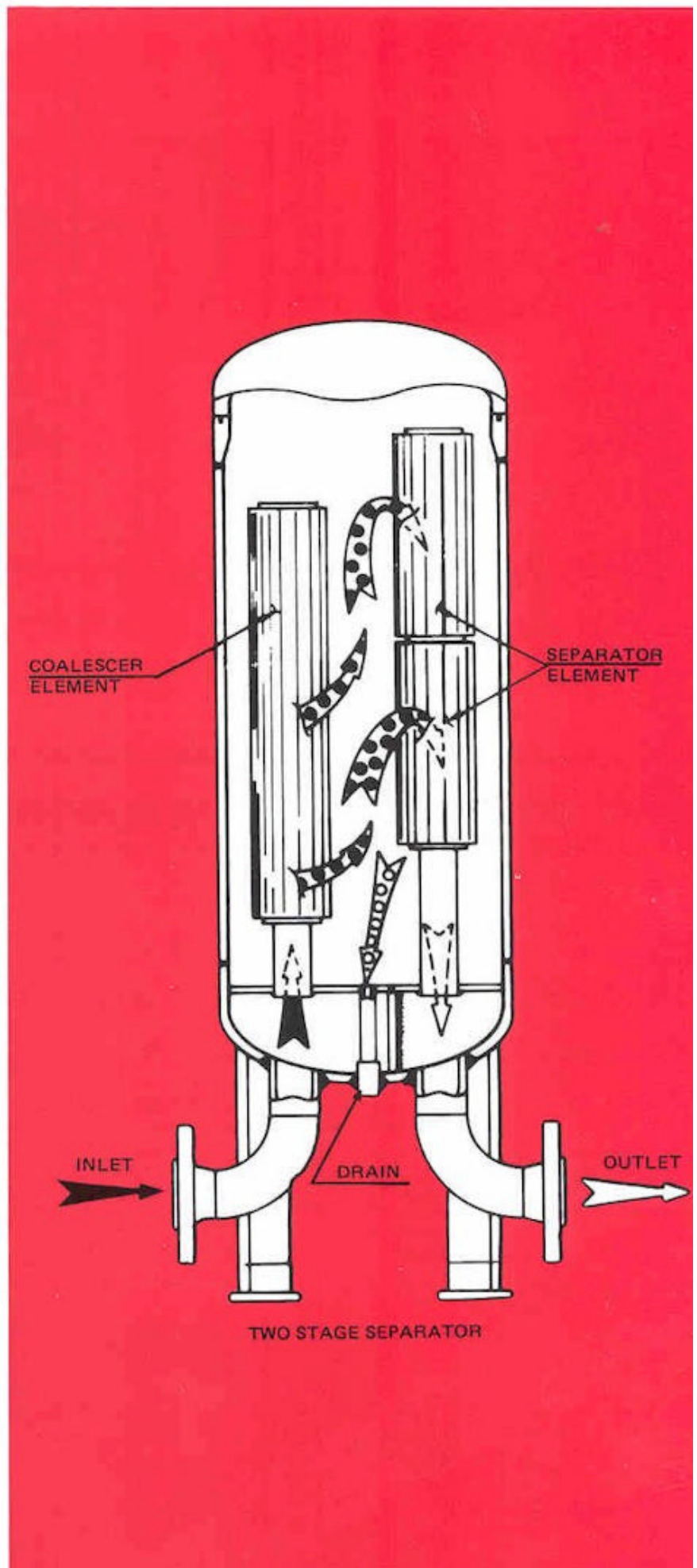
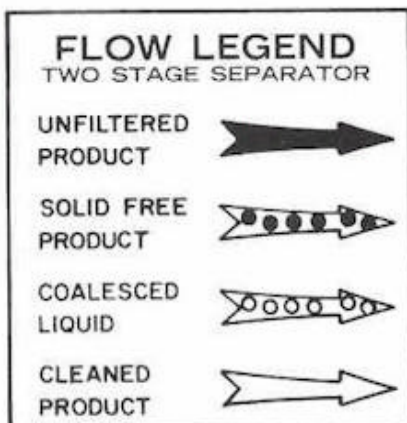
THE PECO TWO STAGE SEPARATOR

The Peco Series 110V two stage separator is designed to remove water and solids entrained in streams with high flow rates (see below). It is particularly effective for separating two immiscible liquids with different specific gravities. The Peco Series 110V meets or exceeds military specifications and is especially suited for terminal operations and process systems where high solids concentrations are not encountered.

Standard vessels are manufactured of carbon steel with a design pressure of 150 psig, ASME Code. Each unit can be equipped with a Peco Swing Bolt or Quick Opening Closure.

Units requiring special accessories may be ordered by contacting the factory.

A heavy solids load should be prefiltered before separation. A sample should be analyzed to determine if prefiltering is needed. Consult Peco for laboratory analysis.



PHASE SEPARATOR ELEMENTS

Peco offers a choice of media for removing water and solids from hydrocarbon liquids. A concise description of

the three basic types of elements used in Peco Series 110V and Series 110H are provided below.

Peco Series C Fiberglass Coalescing Element

The Peco Series C molded fiberglass coalescing element is a high efficiency coalescing element. This element is constructed of glass fibers of specific diameters which are compressed to the proper gradient density and bonded with inert phenolic resins and silicones. The series C is designed to provide efficient service for specific applications.

Peco Series S Separator Elements

Peco Series S separator elements are constructed of a special silicone impregnated membrane. These elements efficiently separate the coalesced water from the hydrocarbon stream with exceedingly low differential pressure. It is used in combination with the Series C Fiberglass Coalescing Elements.

Peco Wafer Packs

The Peco wafer packs are used in the single stage Series 110H. Wafer packs are constructed of a combination of glass fibers, excelsior and/or steel wool. Each element has the proper depth, required density and uniformity to meet specific applications.

