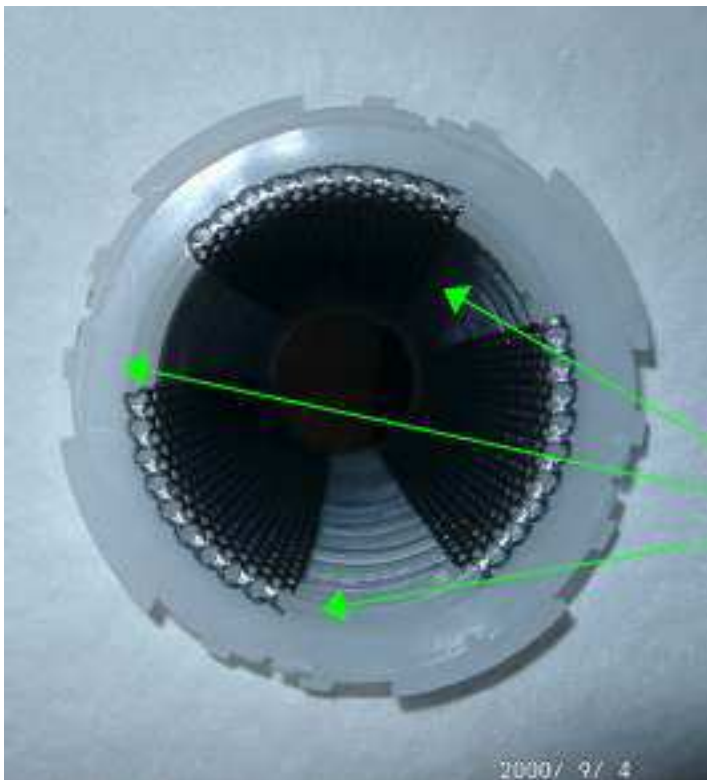


Cutaway image of Becodisc lenticular module



Hard pressed stainless steel support structure to ensure absolute module integrity not only during filtration and sterilisation but also construction transport and installation.



Examples of competitor products with inferior construction and components.



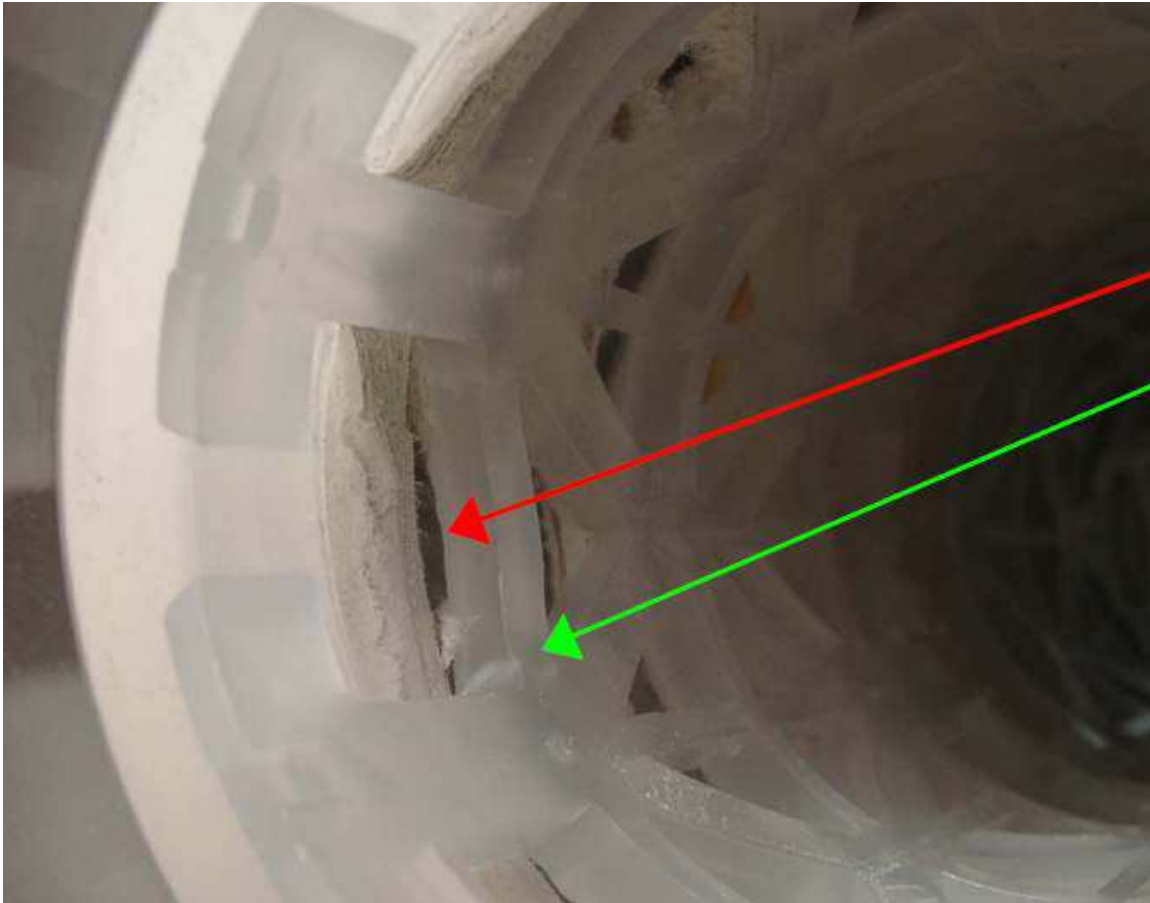


Becodisc in operation



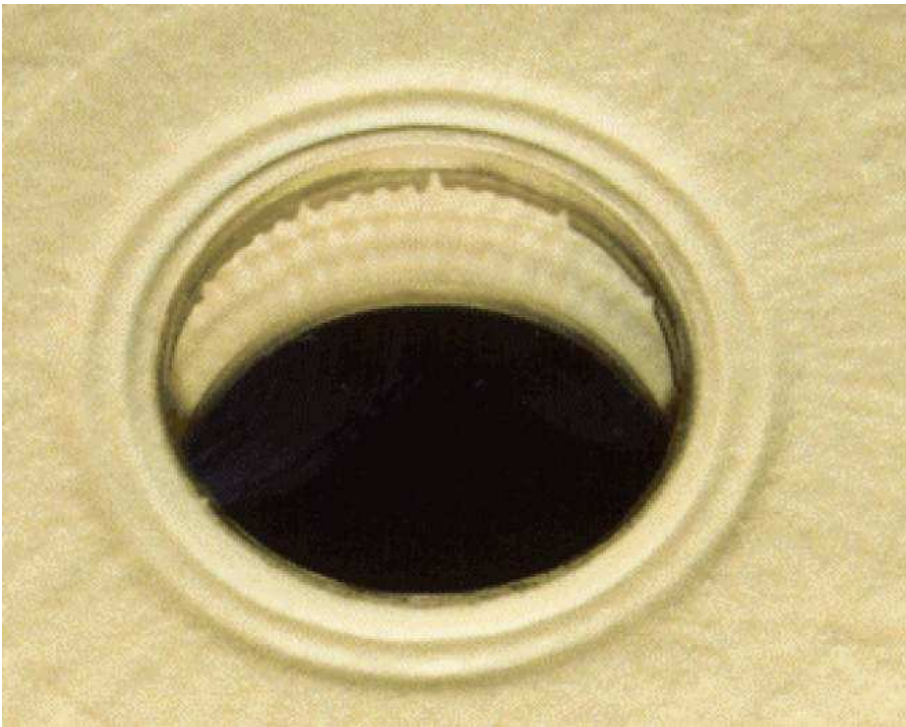
Image taken of market leading competitors module that is pressed too hard and therefore caused damage to the media.

Result = bypass effect



Above: due to the packing density of this competitor's product, the module is put under such high pressure that both the plastic components and sheets can be easily damaged during production.

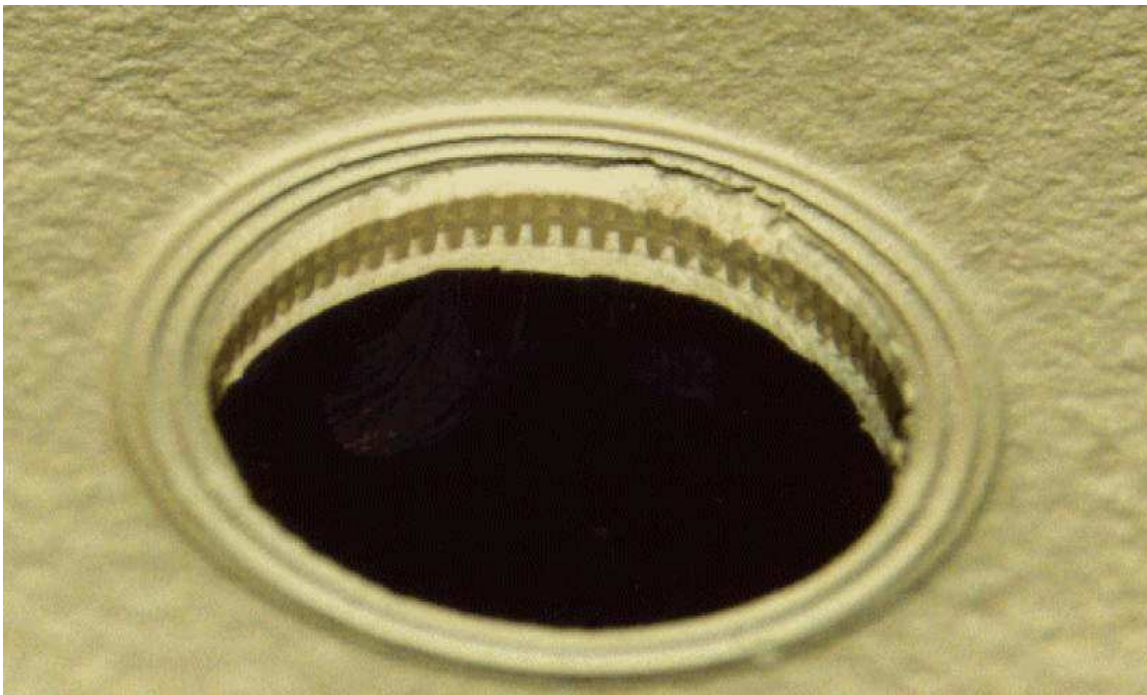
Result = fibre release on filtration side
= plastic core can cause issues during filtration process



Above: Becodisc offers Edge Support Ring which covers the depth media on the filtrate side.

Result = no fibre release

= safe and consistent filtration process



Above: fibre release on competitor product without edge support ring.

Result = fibre release (premature membrane blockage, inconsistent filtration and product contamination on filtrate side).